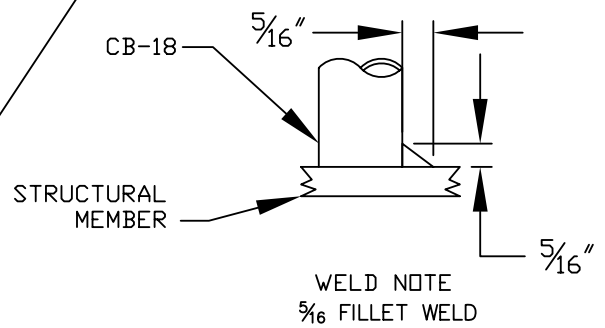


NOTES:

1. Weld CB-18 to a structural member capable of resisting a 5,000 lb. load using a $\frac{5}{16}$ " fillet weld.
2. All welding shall be performed by a certified welder using E-70xx rod or wire feed.
3. Prep galvanized areas per AWS D19.0 prior to welding.
4. Touch-up galvanized area after welding per ASTM A780.



INSTALLATION INSTRUCTIONS			TITLE CB SERIES ROOF ANCHOR			
DESIGNED BY:	B. WOODYARD	1992	DWG NO. CB-18 WELDMENT			
DRAWN BY:	PHIL GOMES	01/27/2005			A	NEW
CHECKED BY:	M. VOLLMER	CHECKED DATE	SCALE: NONE		SHEET: 1	
APPD BY:	M. VOLLMER	APPROVED DATE				