

GUARDIAN
FALL PROTECTION
PERFORMANCE SAFETY GEAR



Skyhook Swivel Top
Guardian Part #00380

USER'S MANUAL

DO NOT THROW AWAY THESE INSTRUCTIONS!
READ AND UNDERSTAND BEFORE USING EQUIPMENT!

TABLE OF CONTENTS:

INTRODUCTION.....	Page 3
USER INFORMATION.....	Page 3
GENERAL SYSTEM SELECTION CRITERIA.....	Page 3
TRAINING REQUIREMENTS.....	Page 4
RESCUE PLAN.....	Page 4
DESCRIPTION OF GUARDIAN SKYHOOK SWIVEL TOP.....	Page 4
MAINTENANCE CLEANING AND STORAGE.....	Page 5
INSPECTION.....	Page 5
PRIOR TO EACH USE.....	Page 5
PRODUCT APPLICATION.....	Page 6
APPLICABLE STANDARDS.....	Page 6
LIMITATIONS.....	Page 7
SYSTEM REQUIREMENTS.....	Page 8
ANCHORAGE STRENGTH REQUIREMENTS.....	Page 8
BEFORE INSTALLING THE GUARDIAN SKYHOOK SWIVEL TOP.....	Page 9
SKYHOOK SWIVEL TOP INSTALLATION INSTRUCTIONS.....	Page 9
INSTALLING THE RETRACTABLE LIFE LINE.....	Page 9
INSTALLING THE RETRACTABLE SWIVEL ADAPTER.....	Page 10
LABELS.....	Page 10
INSPECTION LOG.....	Page 11

WARNING!

DO NOT:

- Do not alter or misuse the equipment unless approved by manufacturer.
- Do not use combinations of components or subsystems that may affect or interfere with the safe, compatible function of each other.
- Do not expose the equipment to chemicals which may produce a harmful effect or degrade the equipment. Consult manufacturer in cases where doubt exists.
- Do not use the equipment around moving machinery or electrical hazards unless specifically designed for such use.
- Do not use the equipment around sharp edges or abrasive surfaces unless intended for such use.



INTRODUCTION:

Thank you for purchasing the Guardian Skyhook Swivel Top. This manual should be read and understood in its entirety, and used as part of a training program as required by OSHA or any applicable state regulatory agency.

This and any other included instructions must be made available to the users of the equipment. The user must understand the proper equipment use and limitations.

This manual covers the maintenance, installation, and use of the Guardian Skyhook Swivel Top.
Guardian Part Number: 00380

USER INFORMATION:

Date of First Use _____

Serial # _____

Trainer _____

User _____

GENERAL SYSTEM SELECTION CRITERIA:

Selection of fall protection shall be made by a Competent Person. All fall protection equipment shall be purchased new and unused.

The equipment is designed for use as a part of a personal fall protection system. Components shall not be used for any other operation other than that which it has been designed and approved.

Fall Protection Systems shall be designed to comply with OSHA or applicable state regulatory limitations. Systems must be used in a compliant manner.

Consult a doctor if there is any reason to doubt a user's ability to withstand and safely absorb fall arrest forces or perform setup of equipment. Age, fitness, and health conditions can seriously affect the worker should a fall occur. Pregnant women and minors should not use this equipment.

IMPORTANT!

DO NOT HANG EQUIPMENT, RIGGING, OR STAGING FROM FALL PROTECTION ANCHORS.

TRAINING REQUIREMENTS:

The employer must ensure that each employee who might be exposed to fall hazards has been trained by a Competent or Qualified Person. The training program must include the following:

- The ability to recognize the hazards of falling
- The procedures to be followed in order to minimize these hazards.
- All Relevant Federal, State, and local regulatory requirements, procedures, and standards
- Correct erecting, maintaining, disassembling, and inspection of the fall protection systems being used
- Use of personal fall arrest systems

RESCUE PLAN:

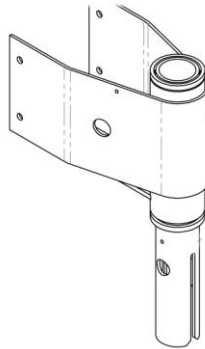
The user is required to have a rescue plan and the means at hand to implement it when using the equipment. The plan shall be project specific. Employees shall be trained in self-rescue or alternate means shall be provided for prompt rescue in the event of a fall.

IMPORTANT!

ANY EQUIPMENT SUBJECTED TO THE FORCES OF A FALL ARREST MUST BE REMOVED FROM SERVICE IMMEDIATELY. CONTACT YOUR DISTRIBUTOR OR GUARDIAN ABOUT POLICIES REGARDING REPLACEMENT OF GUARDIAN COMPONENTS INVOLVED IN A FALL.

DESCRIPTION OF GUARDIAN SKYHOOK SWIVEL TOP:

The Guardian Skyhook Swivel Top is a roof mounted fall protection system designed for use on Skyhook Rooftop Anchors. It allows workers free movement while tied off to an approved and already installed Skyhook Anchor.



MAINTENANCE, CLEANING, AND STORAGE:

- Repairs to the Guardian Skyhook Swivel Top can be made only by a Guardian representative or person or entity authorized by Guardian. Contact Guardian for maintenance and repair.
- Cleaning after use is important for maintaining the safety and life of the equipment.
- Cleanse the equipment of all dirt, corrosives, and contaminants.
- If the Guardian Skyhook Swivel Top cannot simply be wiped clean use a mild soap and water, rinse, wipe to dry.
- Store the Guardian Skyhook Swivel Top where it cannot be affected by heat, light, excessive moisture, oil, chemicals, or other degrading elements.

INSPECTION:

- Before each use, the worker must inspect all fall protection equipment.
- A formal inspection must be made by a Competent or Qualified Person other than the user at least every six months. Record the results of these inspections in the Inspection Log in the back of this manual.
- Visually inspect all components of the Skyhook Swivel Top, looking for any signs corrosion, bending, cracks, or deformations, paying particular attention to the welded areas.

WARNING!

IF ANY COMPONENT OF THE SKYHOOK SWIVEL TOP DOES NOT PASS INSPECTION, REMOVE FROM SERVICE IMMEDIATELY. CONTACT GUARDIAN ABOUT RETURNING DAMAGED UNITS.

PRIOR TO EACH USE:

- Fall protection passive and active equipment shall be inspected by the user for defects, damage, or deterioration.
- Any suspected defective equipment shall be removed from service.
- If the manufacturer's label is not legible or is missing, the equipment shall be removed from service.
- If it is necessary to remove the Skyhook Swivel Top during a portion of a particular job, make sure to re-secure the unit before resuming work

IMPORTANT!

CONSULT WITH YOUR DOCTOR IS THERE IS REASON TO DOUBT YOUR FITNESS TO SAFELY ABSORB THE SHOCK FROM A FALL ARREST. AGE, FITNESS, AND HEALTH CONDITIONS CAN SERIOUSLY AFFECT A WORKER'S ABILITY TO WITHSTAND FALLS. PREGNANT WOMEN OR MINORS MUST NOT USE ANY GUARDIAN FALL PROTECTION EQUIPMENT.

PRODUCT APPLICATION INFORMATION:

The Guardian Skyhook Swivel Top is designed for use as an attachment for Fall Restraint or Fall Arrest.

- **PERSONAL FALL ARREST:** Guardian Skyhook Swivel Top can be used as a component of a Personal Fall Arrest System (PFAS) to protect the user in the event of a fall. PFAS typically include a full body harness, a connecting component, and a secure anchor point. Maximum permissible fall is six (6) feet.
- **RESTRAINT:** Guardian Skyhook Swivel Top can be used as a component of a restraint system to prevent the user from reaching a fall hazard. Restraint systems typically include a full body harness, a lanyard or restraint line, and a secure anchor point. **NO VERTICAL FREE FALL IS PERMITTED.**

APPLICABLE STANDARDS:

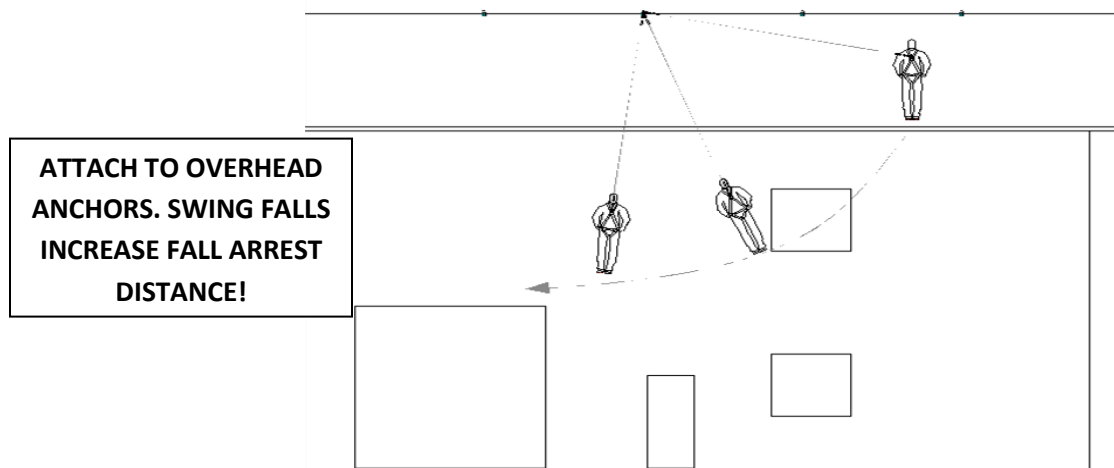
This product is designed to comply with OSHA and ANSI Z359.1 standards when used properly, and in accordance with manufacturer's instructions. Standards might include OSHA regulations, depending on the type of work being done and also might include state regulations if applicable. Consult regulatory agencies for more information on personal fall arrest systems and associated components.

WARNING!

- **Guardian Fall Protection equipment is designed to be used with Guardian approved components.**
- **Please contact Guardian if you have a question regarding compatibility.**
- **Making substitutions without approval from Guardian Fall Protection may lead to injuries or death by compromising the safety and reliability of the complete system.**

LIMITATIONS:

- **CAPACITY:** The Skyhook Swivel Top is designed for use by persons with a combined weight (clothing, tools, etc.) or no more than 310 lbs. but up to 400 lbs. using an approved connecting system. No more than one personal protective system may be connected at one time.
- **FREE FALL:** Personal Fall Arrest Systems (PFAS) used with this equipment must be rigged to limit the freefall to six (6) feet as called out in ANSI Z359.1. Only qualified and personnel trained on the proper use of fall protection such as this anchor are allowed to use this product. Restraint systems must be rigged so that no vertical free fall is possible.
- **FALL CLEARANCE:** There must be sufficient clearance below the use to arrest a fall before the user strikes the ground or any other obstruction. At least 20' of clearance is needed for fall arrest systems. A hazard assessment by a trained and Competent Person is recommended before any work is started that would include the use of fall protection.
- **SWING FALLS:** Swing falls occur when the anchorage point is not directly above the point where a fall occurs. The force of striking an object in a swing fall may cause serious injury or death. Minimize the risk of swing falls by working as close to the anchorage point as possible. **Do NOT permit a swing fall if injury could occur. Swing falls will significantly increase the clearance required when a self retracting lifeline or other variable length connecting system is used. The free fall from a swing fall must not be more than six feet.**



- **POTENTIAL ENVIRONMENTAL HAZARDS:** Use of fall protection equipment in areas with environmental hazards may require additional precautions to prevent injury to the user or damage to the equipment. Hazards may include but are not limited to chemicals, corrosive environments, high voltage power lines, gases, moving machinery and sharp edges.

SYSTEM REQUIREMENTS:

- **COMPATIBILITY OF COMPONENTS:** Guardian Fall Protection equipment is designed to be used with Guardian approved components. Please contact Guardian if you have a question regarding compatibility. Making substitutions without approval from Guardian may lead to injuries and/or death by compromising the safety and reliability of the complete system. A Qualified Person can make a determination on compatibility of equipment from different manufacturers. If in doubt, please contact Guardian for clarification.
- **COMPATIBILITY OF CONNECTORS:** Connectors (D-Rings, hooks, carabiners) must be capable of supporting at least 5,000 lbs. Non-compatible connectors may unintentionally disengage. Self-locking snap hooks and carabiners are *required* by ANSI and OSHA. Connectors must be compatible in size, shape, and strength.
- **MAKING CONNECTIONS:** Only use self-locking snaphooks and carabiners with any Guardian equipment. Do not use equipment that is not compatible. If you have any questions on compatibility, please call Guardian.

WARNING!

LARGE THROAT OPENING SNAPHOOKS SHOULD NOT BE CONNECTED TO STANDARD SIZE D-RINGS OR SIMILAR OBJECTS WHICH WILL RESULT IN A LOAD ON THE GATE IF THE HOOK OR D-RING TWISTS OR ROTATES. LARGE THROAT SNAPHOOKS ARE DESIGNED FOR USE ON FIXED STRUCTURAL ELEMENTS SUCH AS REBAR OR CROSS MEMEBERS THAT ARE NOT SHAPED IN A WAY THAT CAN CAPTURE THE GATE OF THE HOOK.

ANCHORAGE STRENGTH REQUIREMENT:

The anchorage strength required is dependent on the application. Following are anchorage strength requirements for specific applications. Ensure that any anchorage point used in the personal fall protection system meet the following requirements. Please note that these requirements are for single anchor points and not HLL Systems.

- **FALL ARREST:** The structure to which the anchorage connector is attached must sustain static loads applied in the directions permitted by the fall arrest system of at least 3,600 lbs. with the certification of a Qualified Person, or 5,000 lbs. without certification. Refer to OSHA and ANSI for specific definition. This anchor is to be used by one worker only. Do not tie off equipment. Anchorages used for attachment of a personal fall arrest system shall be independent of any anchorage being used to support or suspend platforms.
- **RESTRAINT:** The structure to which the anchor point is attached must sustain static loads applied in the directions permitted by the restraint system or at least 3,000 lbs. When more than one restraint system is in place, the strengths stated above must be multiplied by the number of restraint systems attached to the anchorage.

BEFORE INSTALLING GUARDIAN SKYHOOK SWIVEL TOPS:

Before installation, plan your system. Consider all factors that will affect your safety during use of this equipment. The following list give important points to consider when planning your system.:

- **ANCHORAGE:** Select a rigid anchorage capable of supporting the loads no less than 5,000 lbs. per worker attached. Only one worker may be attached to a Skyhook Swivel Top at a time.
- **SHARP EDGES:** Avoid working where system components may be in contact with, or abrade against, unprotected sharp edges.
- **RESCUE:** OSHA requires that the employer have a rescue plan when using this equipment. The employer must have the ability to perform a rescue quickly and safely.

WARNING!

TRAINING SHOULD BE CONDUCTED WITHOUT EXPOSING ANYONE TO A FALL HAZARD. TRAINING SHOULD BE REPEATED ON A PERIODIC BASIS IN ACCORDANCE WITH YOUR ORGANIZATION'S POLICY AND COMPLIANCE WITH OSHA REGULATIONS.

SKYHOOK SWIVEL TOP INSTALLATION:

1. Attach the Skyhook Anchor to a proper anchorage point which is in line with and above the user. Never use an anchorage point which is far to the left or right of the user in order to minimize swing fall type injuries.
2. The Skyhook Swivel Top fastens to the top of the Skyhook Anchor (without attached horizontal lifeline) when the hole in the Skyhook Anchor is aligned with the Skyhook's top attachment.
3. When the Skyhook Swivel Top's lower attachment hole is aligned with the Skyhook Anchor's larger top attachment, insert the locking hitch pin and secure the pin's locking pin.
4. Ensure that the Skyhook Swivel Top is properly installed by attempting to pull the Skyhook Swivel Top off of the Skyhook Anchor.

INSTALLATING THE RETRACTABLE LIFELINE:

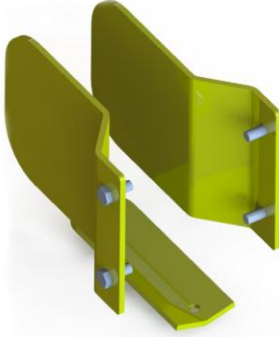
The Guardian Skyhook Swivel Top is designed to accept numerous manufacturer's retractable lifelines (65 foot length maximum).

1. Removed clevis pin from retractable receiver wings.
2. Slide fall block horizontally into position.
3. Reinsert clevis pin and insert hitch pin.
4. Inspect and operate retractable according to manufacturer's instructions.

INSTALLATING THE RETRACTABLE SWIVEL ADAPTOR:

When using 50ft and 65ft retractable lifelines, the retractable swivel adaptor is required (Guardian Part #10975).

1. Before installing the Skyhook Swivel Top, attach the three sections of the adapter as shown below.
2. Secure them with the included bolts.
3. Then proceed with installation of the Skyhook Swivel Top instructions as explained above.



10975 Swivel Adapter



10975 Swivel Adapter Installed

LABELS:

These labels must be present and legible on the Guardian Skyhook Swivel Top at all times.

<p>Skyhook Swivel Top Model# 00380</p> <p>WARNING!!!</p> <p>Always follow manufacturer's instructions supplied with this product. Product must be used in conjunction with properly installed Skyhook Anchors by Guardian.</p> <p>Skyhook must be installed into 20ga. Metal or 3/4" Plywood or equivalent design capable of withstanding 5,000lbs. in the direction of a fall. Skymast is designed for temporary use.</p> <p>OSHA or local standards and regulations MUST be followed at all times. Failure to comply can result in serious injury or death.</p> <p>WARNING!!!</p> <p>All pins must be engaged and present for the system to work properly. Leg skid fasteners must have penetration into truss to achieve proper holding strength.</p> <p>Specifications:</p> <p>Material: Powdercoated Steel Capacity: One worker Max 310lbs. Standard: ANSI Z359.1</p> <p>Date of Manufacture</p> <p>Guardian Fall Protection 800-466-6385 26609 79th Ave. S Kent, WA 98032</p> <p>www.guardianfall.com</p>



INSPECTION LOG:

USER MUST INSPECT EQUIPMENT BEFORE EACH USE. COMPETENT PERSON TO INSPECT AND INITIAL AT LEAST EVERY 6 MONTHS.												
Date of First Use												
YR.	J	F	M	A	M	J	J	A	S	O	N	D
This is a permanent system and does not expire. However a semi-annual inspection is required.												

***“WE PUT OUR NAME ON THE PRODUCT
BECAUSE YOU PUT YOUR LIFE ON THE LINE.”***

Guardian Fall Protection, Inc.
800-466-6385
26609 79th Ave. S.
Kent, WA 98032
www.guardianfall.com