

## INSTRUCTIONS

- 1) Please read these instructions and review the details thoroughly to familiarize yourself with all the components. Heartland EP will assume no responsibility if not installed according to the stated instructions and specifications.
- 2) All parts can be identified by the description on the packaging. These markings will be referenced throughout the instructions and details.
- 3) Clean the surface upon which the product will be installed.
- 4) Lay out parts in their general configuration of assembly.
- 5) Using a chalk line strike a line where the back of the bollard's base pad will be. NOTE: Heartland EP suggests a minimum 12" clearance between the bollard and the object being protected.
- 6) Next, mark the centerline of the bollard on the chalk line.
- 7) Anchor bollard to the floor using four 1/2" x 5" long anchors per bollard. See Anchoring Instructions.
- 8) Finish by inserting the bollard cap into the top of the bollard upright.

**Note:** Warranty is voided if products are not installed as noted on these instructions.

## ANCHORING INSTRUCTIONS

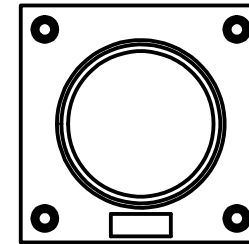
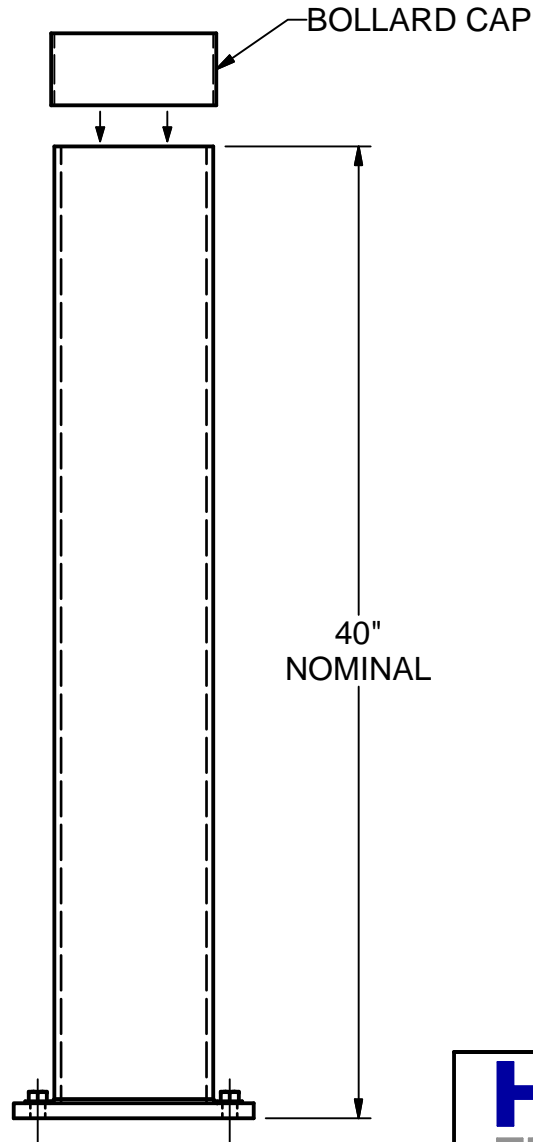
- 1) Drill hole to proper depth and blow clean.
- 2) Drive anchor into hole to desired embedment using socket wrench or powered impact wrench.
- 3) Tighten until hex washer head uniformly contacts column baseplate.

## ANCHOR SPECIFICATIONS

- + DRILL BIT SIZE / LENGTH: 1/2" x 5 1/2"
- + MIN. ANCHOR EMBEDMENT: 4 3/8"
- + ANCHOR HOLE DEPTH: 4 7/8"

## TOOL LIST

- MASONRY DRILL
- IMPACT WRENCH
- SOCKETS
- HAMMER
- CHALK LINE
- LEVEL
- TAPE MEASURE
- 3/4" WRENCH
- MASONARY BITS
- SPUD BAR



**HEARTLAND**  
ENGINEERED PRODUCTS

355 Industrial Drive Harrison, Ohio 45030

Phone: 513-367-0080 Fax: 513-3670081

DRAWN BY: DOB	DATE: 10/15/2007	TITLE INSTALLATION INSTRUCTIONS	
CHECKED BY: DOB	DATE: 10/15/2007	SIZE <b>A</b>	PART NO BOLLARD INSTALL