

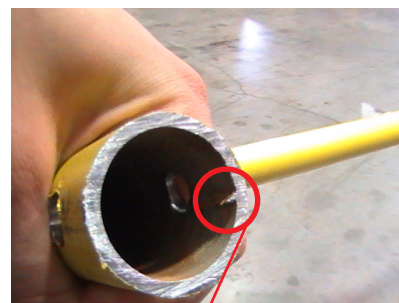


## Installation Guide for 15172 Collapsible Guardrail.

To modify your existing guardrail system, please follow these step by step instructions.

1. Place the supplied template against the leg of your guardrail with the hole parallel to the guardrails. Use a marker and use the cutouts on the template to mark your cut line and drill line.
2. Once your guardrail is marked up on both ends, proceed to drill the hole with a  $17/32$ " drill bit and cut off at the line using a chop saw or sawzall for best results. It is very important to be accurate with your cuts as it can effect the end result of this modification.
3. If the collapsible guardrail bracket does not fit in at first, some filing may be in order. Look in the tube of the guardrail for the weld seam and file it down until the bracket slides in smoothly.
4. Once bracket is in the guardrail, fasten it with the supplied bolt, washers and nut using a  $1/2$ " wrench. You will need to snug these down firmly for the best result.
5. Once you have attached your bracket, you can now re-insert your guardrail into your base plate ensuring that the guardrail folds inwards for easy accessibility when setting it back up.

**WARNING: THIS PRODUCT  
IS ONLY FOR USE WITH  
GUARDIAN FALL PROTECTION  
GUARDRAIL SYSTEMS.**



File this seam

